

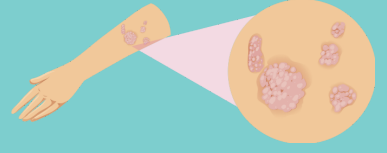
SCREEND'EM

BEFORE YOU TREAT'EM

A clinical tool to help identify spondyloarthropathy (SpA)

SKIN

6-42% of patients with psoriasis develop psoriatic arthritis.



COLITIS OR CROHN'S



Arthritis is one of the most common extra-intestinal manifestations of inflammatory bowel disease. The prevalence of SpA in patients with Crohn's is estimated to be 26% at 6 year follow up.

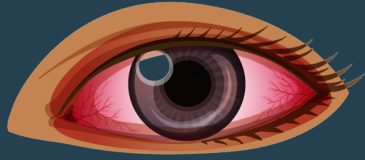
RELATIVES

There is a strong relationship between SpA and HLA-B27 positive patients.

Family members of patients with SpA who are HLA-B27 positive have a 16-fold increase chance of developing ankylosing spondylitis if they are also HLA-B27 positive.



EYES



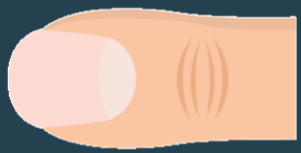
Acute anterior uveitis (AAU) can cause a painful, red eye with photophobia and blurred vision. 40% of patients presenting with idiopathic AAU have undiagnosed SpA. 50% of patients with AAU are HLA-B27 positive and >50% of these have SpA.

EARLY MORNING STIFFNESS

Inactivity related stiffness that lasts for more than 30 minutes is suggestive of inflammatory disease.

NAILS

Nail lesions occur in 87% of SpA patients and include:



- small depressions in the nail (pitting)
- thickening of the nails
- painless detachment from the nail bed (onycholysis).

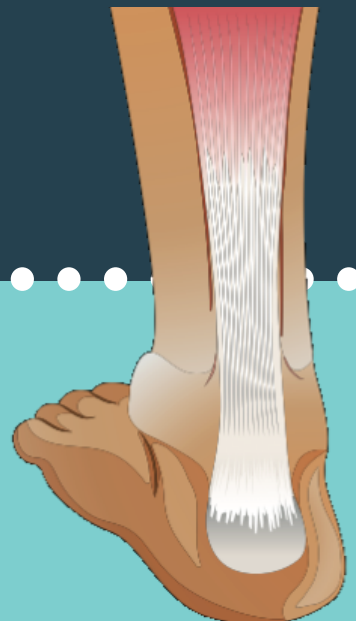
DACTYLITIS

Sausage like swelling of the digits is a hallmark sign of psoriatic arthritis, occurring in 50% of cases.



ENTHESITIS

98% of SpA patients have at least one abnormal enthesis. The most common sites are the Achilles tendon, plantar fascia and patellar tendon.



MOVEMENT & MEDICATION EFFECT

SpA patients report improvement with activity but not with rest, and a favourable response to NSAIDs.

Created by
Paul Kirwan

 @pdkirwan

 THE
KNEE
RESOURCE
RELIABLE KNEE INFORMATION